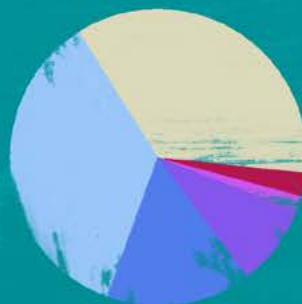
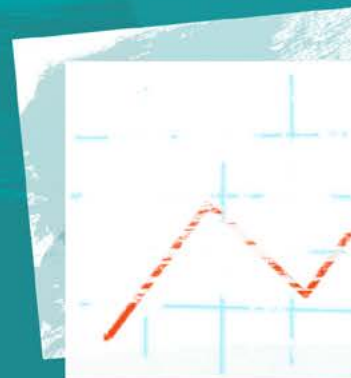


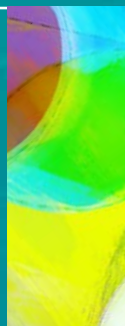


centre for  
sustainable  
energy



## Trustees' Report and Financial Statements Year ended 31 March 2019

Company limited by guarantee  
Company 2219673  
Charity 298740







# centre for sustainable energy

St James Court  
St James Parade  
Bristol BS1 3LH

0117 934 1400

info@cse.org.uk

www.cse.org.uk

twitter: @cse\_bristol

youtube: csebristol

Company 2219673

Charity 298740

The trustees present their annual report together with the audited financial statements for the year 1 April 2018 to 31 March 2019.

The trustees confirm that the Annual Report and financial statements of the company comply with the current statutory requirements, the requirements of the company's governing document and the provisions of the Statement of Recommended Practice (SORP) applicable to charities preparing their accounts in accordance with the Financial Reporting Standards applicable in the UK and the Republic of Ireland.

Since the company qualifies as small under section 383 of the Companies Act 2006, the Strategic Report required of medium and large companies under the Companies Act 2006 (Strategic Report and Directors' Report) Regulations 2013 is not required.

Company 2219673

Charity 298740

## Trustees

Dr Brenda Boardman MBE \*  
Peter Capener MBE  
Ariane Crampton  
Andrew Darnton  
Dr Jane Dennett-Thorpe \*\*  
Peter Ellis  
William Gillis \*\*  
Bill Hull  
Felicity Jones \*\*  
Prof Catherine Mitchell \*  
Anne Obey OBE, *Chair of Trustees*  
Shantha Shanmugalingam \*\*  
Chris Vernon  
Kaye Welfare

\* *resigned 11 October 2018*

\*\* *appointed 4 October 2018*

## Company Secretary

Kaye Welfare

## Chief Executive

Simon Roberts OBE

## Registered office

St James Court  
St James Parade  
Bristol BS1 3LH

## Independent auditors

Bishop Fleming LLP  
16 Queen Square  
Bristol BS1 4NT

## Bankers

HSBC Bank plc  
62 George White Street  
Bristol BS1 3BA

## Solicitors

TLT LLP  
One Redcliff Street  
Bristol BS1 6PT



**Objectives & activities p4**

**A year in the life of CSE p6**

**Achievements & performance p8**

**Funders & clients p16**

**Independent auditor's report p20**

**Statement of financial activities p22**

**Balance sheet p23**

**Notes to financial statements p24**



# Objectives & activities

.....

CSE's mission as an independent charity is to share our knowledge and practical experience to enable people to change the way they think and act about energy.

■ Practicing mindfulness in nature on the Bright Green Future summer camp



We are in the business of societal change. Our vision is a world where sustainability is second nature, carbon emissions have been cut to safe levels and fuel poverty has been replaced by energy justice.

Or, to put it another way:

*We believe we owe it to current and future generations for the UK to reduce our collective carbon emissions rapidly to virtually zero.*

*We think that being able to afford to keep healthily warm in winter is a basic right for every household which should be both upheld and realised in practice.*

All our work is ultimately dedicated to achieving this positive vision. It's what we mean by 'sustainable energy' and it's why we exist.

We achieve our mission by:

- Developing and delivering effective services which enable individuals and organisations in our local area (West of England, Somerset, Wiltshire and Dorset) to make their energy supply and use more sustainable.
- Empowering and supporting effective action by others in their organisations and communities across the UK.
- Testing and nurturing new ideas to improve impact, accelerate change and engage new audiences in the achievement of lower carbon emissions and an end to cold homes.
- Using our experience and evidence to shape local and national policy through expert analysis and research and targeted activity to influence policy-makers.

Our work is delivered in partnership with national and local government and associated agencies, community groups, the energy industry, business, other energy charities across the country, and the general public. At any given time, CSE has some 70-80 different and separately funded projects underway. More than 110 projects were delivered during 2018-19.

In April 2017 we published a new articulation of our purpose, methods and values which trustees and staff developed during the previous year. The document\* explains what we are trying to achieve as a charity, the approaches we take to doing so (and why we think they have an impact), and the values which shape how we go about our work.



\* [www.cse.org.uk/downloads/file/CSE-purpose-methods-values-2017.pdf](http://www.cse.org.uk/downloads/file/CSE-purpose-methods-values-2017.pdf)

# A year in the life of CSE

April 2018



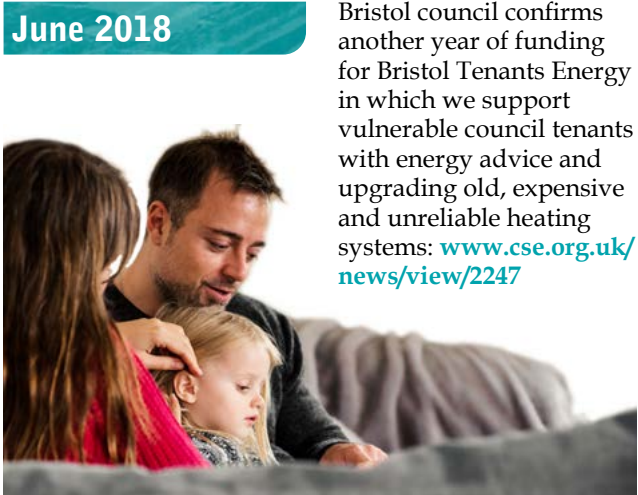
We evaluate Citizens Advice's Winter Resilience pilot, which seeks to implement a single point of contact for housing and health referral services, as recommended by the National Institute for Health and Care Excellence (NICE) guideline for tackling ill health due to cold homes. [www.cse.org.uk/news/view/2232](http://www.cse.org.uk/news/view/2232)

May 2018



Tackling fuel poverty, reducing carbon emissions and keeping energy bills down. All are desirable aims, but what are the policy tensions and synergies between them? The Committee on Fuel Poverty publishes our report exploring this [www.cse.org.uk/news/view/2244](http://www.cse.org.uk/news/view/2244)

June 2018



Bristol council confirms another year of funding for Bristol Tenants Energy in which we support vulnerable council tenants with energy advice and upgrading old, expensive and unreliable heating systems: [www.cse.org.uk/news/view/2247](http://www.cse.org.uk/news/view/2247)

July 2018

CSE's Josh Thumim explains to a TV crew in Latvia how THERMOS software will give the developers of district heating and cooling systems the ability to identify the options accurately, rapidly and cheaply.

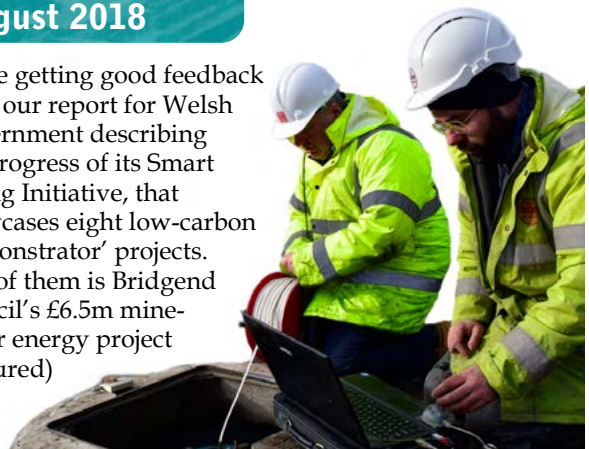
[www.cse.org.uk/news/view/2248](http://www.cse.org.uk/news/view/2248)



August 2018

We're getting good feedback from our report for Welsh Government describing the progress of its Smart Living Initiative, that showcases eight low-carbon 'demonstrator' projects. One of them is Bridgend council's £6.5m mine-water energy project (pictured)

[www.cse.org.uk/news/view/2245](http://www.cse.org.uk/news/view/2245)



September 2018

Our energy advisors help thousands of people on low-incomes save money on their energy bills. Lorna Wilcox (pictured) did a tariff check for a client and found they could save an estimated £1,219 a year. "She had said she saw no point in switching because although her bills were high, 'that was that'," said Lorna. "So many people stick with 'the gas board' or 'SWEB' or whatever and never switch, and they're taken advantage of, frankly."







Also in January, we entered our 40th anniversary year. This is the birthday cake, created by our own super-baker, Ellie Stevens ...

## October 2018



This month saw the launch of Next Generation, a £1m fund that offers grants of around £100,000 to community businesses to develop local-level decarbonised-energy business models. We're heading a multi-disciplinary consortium to deliver this innovating project.  
[www.next-generation.org.uk](http://www.next-generation.org.uk)

## January 2019



CSE's Elliot Clark begins a residency at Swindon's Great Western Hospital, working with NHS staff to ensure that patients aren't discharged to cold homes with inadequate heating systems.  
[www.cse.org.uk/news/view/2304](http://www.cse.org.uk/news/view/2304)

## November 2018



*"If insulation is done properly, it will make your house warmer and cheaper to heat. Done badly and it can damage your home and blight your life."*

Ian Preston reacts to news of failures in solid-wall insulation schemes.

[www.cse.org.uk/news/view/2245](http://www.cse.org.uk/news/view/2245)

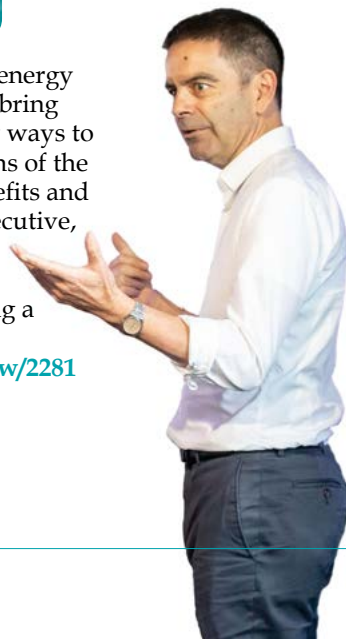
## February 2019



We administer a UK Power Networks fund that sees 16 not-for-profit organisations (including Blackstock Trust, pictured) share £250,000 to combat fuel poverty and improve the energy efficiency of community spaces. [www.cse.org.uk/news/view/2325](http://www.cse.org.uk/news/view/2325)

## December 2018

Significant changes to our energy system are underway that bring with them completely new ways to generate unfairness in terms of the distribution of system benefits and system costs. Our chief executive, Simon Roberts, asks what the principle of 'no one left behind' means for regulating a smarter energy system.  
[www.cse.org.uk/news/view/2281](http://www.cse.org.uk/news/view/2281)



## March 2019

Dozens of local authorities have responded to unprecedented public concern about climate change by passing climate emergency motions. But how should they turn this into meaningful programmes of action?  
[www.cse.org.uk/news/view/2323](http://www.cse.org.uk/news/view/2323)



# Achievements & performance

.....

## Our five high level objectives

- 1 No one suffers a cold home
- 2 Everyone empowered to take action and support sustainable energy
- 3 Every building low carbon and liveable
- 4 Places shaped for sustainable energy
- 5 A rapidly decarbonising energy system that works for everyone





Our work in 2018-19, probably our busiest year in our nearly 40 year history, was driven by the five high level objectives which form the core of our organisational strategy, adopted by trustees in March 2017. These were augmented with further detailed strategic planning during the year.

These interlinked objectives describe the outcomes we are seeking to achieve and create a framework for organising our resources, knowledge and capabilities to maximise our impact.

They summarise as:

- 1 No one suffers a cold home.
- 2 Everyone empowered to take action and support sustainable energy.
- 3 Every building low carbon and liveable.
- 4 Places shaped for sustainable energy.
- 5 A rapidly decarbonising energy system that works for everyone.

Detailed below, against these objectives, are some of the highlights of our work during 2018-19. Many of our projects deliver against more than one objective and we are now building a stronger cross-team approach to reflect this. This has helped ensure that we are more effective in applying all of our capabilities, from one-to-one advice and community engagement to data analysis and policy research, to achieve each objective.

Our website, [www.cse.org.uk](http://www.cse.org.uk), provides fuller details of our work and gives free access to all of our publications and resources, including our popular energy advice leaflets. This sharing of knowledge and practical experience is central to CSE's mission; doing it well enables others to take action more readily and thus increases our impact and accelerates change.

## OBJECTIVE 1

### No one suffers a cold home

Being able to keep adequately, healthily warm in winter is a basic human need – and a fundamental component of sustainable energy. Our objective is to ensure that everyone can afford to keep their homes warm when they need to by tackling the root causes of energy injustice in the UK, from addressing the poor energy performance of housing and limited energy know-how to challenging poor supplier practices and market design and promoting better policies.

In the year, our home energy team directly supported more than 9,460 vulnerable households, mainly in our local area, to address their energy-related challenges; this is a 15% increase on the previous year. We've also worked hard to re-contact people we've previously supported to ensure their energy deals are up to date and they are accessing the latest available assistance. The advice and support given by the team enabled these households to realise savings of more than £1.55m on their fuel bills (2017-18: £1.4m).



■ We helped nearly 10,000 people in 2018-19 with issues ranging from fuel debt to insulating their lofts



This work included the Warmer Homes and Money (WHAM) initiative ([www.cse.org.uk/wham](http://www.cse.org.uk/wham)) which, over the last 18 months, has become a key feature of our work to provide more intensive help to the most vulnerable households in Bristol at risk of fuel poverty. Supported by Bristol City Council's Impact Fund, WHAM features a fully integrated partnership between CSE, Talking Money and WE Care Home Improvements. By sharing a single referral system, the organisations can bring the best of each other's knowledge and capabilities to each case. Further funding from Bristol Energy's new Fuel Good Fund ([www.cse.org.uk/news/view/2321](http://www.cse.org.uk/news/view/2321)) is enabling us to expand this vital work to increase its impact. And new funding from the National Grid/ Affordable Warmth Solutions Warm Homes Fund means that in 2019-20 we will be adding two new case-workers to the team, embedding them at hospitals across Bristol and North Somerset and the local Citizens Advice.

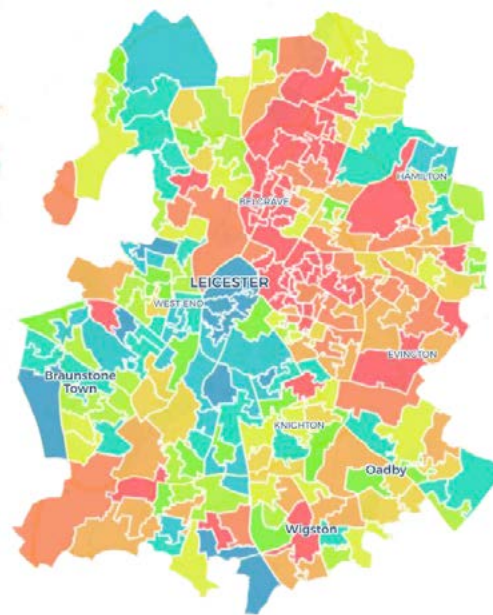
We've been able to expand the depth of support we offer in Somerset during 2018-19. Burnham and Weston Energy CIC is supporting our fuel poverty advice service for those living in the vicinity of Wick Farm, a community owned solar project in Somerset which provides funding through its community benefit scheme. We have also won funds from the Ofgem Redress fund (managed by the Energy Saving Trust) to work with private landlords across Somerset. We will provide in-depth support for both landlords and tenants to make sure their homes meet minimum energy efficiency standards.

We continue to work closely with our local electricity distribution network operator (DNO), Western Power Distribution (WPD), providing key elements of its sector-leading programme of assistance for

vulnerable households. These include the PowerUp advice hub for the South West region and what has become a freely available mapping tool ([www.cse.org.uk/news/view/2265](http://www.cse.org.uk/news/view/2265)) to enable better targeting of efforts to reach and support vulnerable households.

We have developed similar mapping tools for other DNOs – SP Energy Networks, Scottish and Southern Energy Networks (SSEN), and Electricity North West – and for Cadent (gas distribution). We also undertook a strategic review of Electricity North West's work to support vulnerable households, engaging with staff from across the business to reveal opportunities to improve practice and increase impact.

Research we undertook for Citizens Advice Scotland (in partnership with Changeworks) exposed what has become a postcode lottery for support available from DNOs for the vulnerable households on their networks. The research revealed that vulnerable people living in areas served by the best performing DNO (WPD) were at least 20 times more likely to receive support to improve their energy resilience than those in parts of the country served by the worst performing DNOs. We have brought this to the attention of energy regulator Ofgem.



■ Left: Joe, Jules and Pete are three new recruits to the expanded WHAM team. Top: Mapping fuel poverty and other social indicators.

With the support of Wiltshire and Swindon Borough Councils, SSEN, and Wessex Water, in January 2019 we kicked off a three month pilot deploying an energy advisor one day a week to Swindon's Great Western Hospital to reach some of those most immediately vulnerable to the health impacts of a cold home. They worked alongside NHS ward managers, discharge nurses, occupational therapists and social care services to ensure that, following their stay, patients who might be going home to cold and damp houses are given help to make those homes warmer and their heating bills more affordable.

This is in line with one of the quality standards to tackle the health impacts of cold homes established by NICE with CSE's input: that no one should be discharged from hospital to a cold home. Early results from the pilot are very promising, with particularly positive feedback from NHS staff ([www.cse.org.uk/news/view/2336](http://www.cse.org.uk/news/view/2336)) who welcomed CSE's role in addressing an issue they feel is beyond their reach. We are now exploring funding opportunities to sustain the activity beyond this pilot.



## OBJECTIVE 2

### Everyone empowered to take action and support sustainable energy

We believe that the transition to a sustainable energy system requires the meaningful involvement and consent of the public in all its various guises, values and predilections. We seek to stimulate this involvement and consent through our interactions with people – as consumers, citizens and members of many communities (from neighbourhoods to workplaces to networks of shared interests). That means understanding the differences between people and developing new and varied types of conversations and interventions.

Our Bright Green Future (BGF) youth leadership programme ([www.bright-green-future.org.uk](http://www.bright-green-future.org.uk)) continues to inspire and train the next

generation of environmental leaders to reflect and take meaningful action. To date, 91 students are enrolled or have graduated from the one year training programme, and our fourth cohort of 51 young people aged 14–17 is set to start in September 2019. All of the participants complete a combination of face-to-face and distance learning in environmental action, policy and self-development, as well as completing a local sustainability-focused project in their community. These have ranged from organising a community tree-planting event to

the creation of a school play based on themes of climate breakdown. In our most recent survey of the current BGF cohort: 88% of respondents stated that they had gained new skills and knowledge in low carbon management; 69% reported improvements in self-esteem; 63% increased levels of well-being; and 57% stated that BGF had influenced their career or future learning choices by inspiring them to do something that they weren't considering before.

All of our energy advice materials, factsheets, resources and tools are



■ Making friends and group discussion at the Bright Green Future summer camp





freely available on our website alongside details of all our project and research reports. The hunger for decent guidance on how to use room heaters, night storage heaters and heating controls efficiently and affordably means our webpages, factsheets and videos on these items often top the charts in Google searches. Over the year, nearly half a million visitors viewed more than three-quarters-of-a-million pages and downloaded more than 100,000 free resources. Views of our advice and information videos on YouTube jumped 43% in the year, to 212,000 views clocking up enough viewing minutes to complete a whole year of video-watching!

We have continued our action research project, Powering Up! ([www.cse.org.uk/powering-up](http://www.cse.org.uk/powering-up)), funded by the Friends Provident Foundation with support for dissemination and advocacy from the Joseph Rowntree Charitable Trust. The project is exploring how best to engage households in more deprived communities with the opportunities to cut energy bills and gain the benefits of being involved in community energy projects.

Detailed ethnographic studies of three communities (in Newport, Swindon and Bridgwater, Somerset) undertaken in 2017-18 had suggested potential interest while identifying significant challenges to organising and involving people locally. So we have been testing different approaches – and often learning the hard way when what we thought were well-tailored interventions turn out to gain no traction. But we are finding approaches which seem to break through and the project team has been regularly sharing their reflections on their experiences and what they've been learning-through-doing ([www.cse.org.uk/news/view/2279](http://www.cse.org.uk/news/view/2279) and [www.cse.org.uk/news/view/2346](http://www.cse.org.uk/news/view/2346)).

## OBJECTIVE 3

### Every building low carbon and liveable

Meeting the UK's moral and legal obligations to cut carbon emissions to safe levels will require more or less every building – both existing and new – and all the energy-using appliances and equipment in them to deliver exceptional energy performance and use near-zero carbon energy within about 15 years.

This means massive growth in the scale, rate and quality of energy retrofit of existing buildings and the decarbonisation of the fuel or power providing heating. And it will require all new buildings to be designed and built to zero carbon standards. These improvements must also reflect the need for buildings, whatever their purpose, to be 'liveable' – including providing controllability for occupants and not overheating in summer.

2018-19 witnessed a significant step forward in our work to build the market for low and zero carbon refurbishment of existing homes, a field where there had been little policy effort over the last few years. Our pilot programme, named Futureproof, is focused on the West of England; it has the long-term goal of making such refurbishment the natural choice for all homeowners

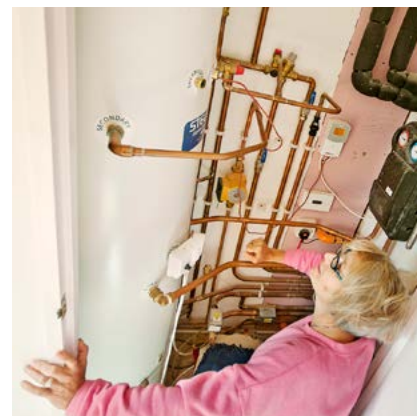


across the region ([www.futureproof.uk.net](http://www.futureproof.uk.net)).

The project builds on some thinking we'd published the previous year as 'Do the next million first' ([www.cse.org.uk/news/view/2194](http://www.cse.org.uk/news/view/2194)). Alongside a challenge to previous policy thinking, the document highlighted the problems of (a) trying to grow demand for low carbon home improvements without a ready-and-willing supply chain, and (b) trying to grow a supply chain without obvious new demand. We highlighted the need for local orchestration of both supply and demand to break this impasse.

This proved to be a persuasive proposition and led the Department of Business Energy and Industrial Strategy (BEIS) to launch a competition in 2018 to fund six pilots across England over 2½ years to test different ways to stimulate local markets and supply chains without relying on grants to householders. Our concept, Futureproof, was one of the winning bids.

Working with green building technique specialists The Green Register, with support from Bristol City Council and Greenhouse PR, Futureproof is targeted at 'already-interested householders' and 'decent-but-not-yet-green builders'. It uses open doors events (like the award-winning Bristol Green Doors, which CSE took under its







■ Futureproof aims to connect householders like James and Poppy (far left) or Sophie (left) who want to make low-carbon refurbishments to their homes with contractors keen to break into the green market (above)

wing during the year) to harness the experience and enthusiasm of pioneer householders to stimulate those home-owners likely to act next. And it enlists the skills and knowledge of the pioneer green builders who have regularly undertaken very low carbon refurbishments and improvement; they are being recruited to train quality builders new to the techniques – builder-to-builder and on-site.

After a first phase of market research, service design and engagement with the building trades, the initiative went ‘live’ in May 2019. There’s plenty of learning going on, with evidence of what approaches are and aren’t effective at securing the involvement of builders and real market testing revealing whether target households respond as we’d anticipated. We’re actively sharing this learning with the five other BEIS-funded pilots and will report on progress further during 2019.

BEIS, the Scottish Government and the Committee on Climate Change all continue to benefit from using the National Household Model (NHM)

[www.cse.org.uk/national-household-model](http://www.cse.org.uk/national-household-model)) which we developed and maintain for government. The NHM provides a sophisticated tool for modelling housing stocks and evaluating the costs, impacts and benefits of different policy options to improve them.

We have also been involved in efforts to ensure that all new buildings are liveable and effectively zero carbon. This relies in particular on well-evidenced local planning policies. Demonstrating the viability of planning policies which ensure new developments do not lead to increased carbon emissions was the focus of a study we undertook, in partnership with Currie & Brown, for Bath and North East Somerset Council (acting on behalf of all four planning authorities in the West of England). The study (a) demonstrated: the cost-effectiveness of achieving much higher energy performance standards for new build; and (b) established how efforts to reduce carbon emissions both on-site and off-site could ensure a net zero carbon outcome for all new developments in the region ([www.cse.org.uk/news/view/2327](http://www.cse.org.uk/news/view/2327)).

## OBJECTIVE 4

### Places shaped for sustainable energy

Realising sustainable energy goals (like decarbonisation, affordability and reliability) will result in changes everywhere – to our buildings and neighbourhoods, our local landscapes – and for everyone. Nowhere and no one gets an ‘opt out’. But ultimately these goals will only be achieved if people are involved and give their consent for change. This requires processes to shape places and plans for change which put sustainable energy at their heart, give voice to a wide range of people and offer them a genuine stake in, and influence over, the resulting initiatives.

The centrepiece of our work in this field is our programme, funded by the Esmée Fairbairn Foundation, to (a) support local groups to consider climate change and sustainable energy issues as they make their neighbourhood and local plans, and (b) push for policy changes nationally for this to become a requirement of such processes in future.

In 2018-19 CSE engaged 115 neighbourhood planning groups and 82 Local Planning Authorities through seminars and talks. And we gave in-depth tailored support to 29 groups with a further five given lighter touch assistance. In addition, we have promoted the need for better local practice and national policy changes through articles, filmed interviews and seminars with nationally significant planning organisations and publications.





Based on feedback and demand, over the year we have strengthened our offer to neighbourhood groups; we now provide a suite of community engagement techniques and resources (pictured) to help build a public mandate for more ambitious policies, plus hands-on, in-person support for running local events. Our guidance documents were downloaded more than 6,100 times in the year with many more given out at events and workshops.

Groups such as Bridport and Knightsbridge, which we supported at the start of the programme are now seeing their plans being adopted or submitted for adoption with ground-breaking policies in them. In the case of Knightsbridge, this means embedding ambitious policies addressing air quality and sustainable design; in the case of Bridport, seeking to set binding and demanding energy performance standards for new development.

In late September 2018 we completed a significant overhaul of how our website offers free access to resources to support local and community energy activities. This reboot created a more dedicated 'local energy' area on the site designed to better reflect users' current needs and interests. It sparked a nearly 30-fold increase in page visits, shifting from 550 views in the first six months of the year to more than 15,440 in the second half.

As more local authorities started to follow Bristol City Council's lead last November by adopting resolutions declaring a climate

emergency, we have continued our work supporting local authorities and regions to develop effective strategies to achieve more rapid carbon emission reductions. In 2018-19 we worked with Gloucestershire County Council, Gloucestershire First Local Enterprise Partnership and a wide range of stakeholders across the county to produce the Gloucestershire Sustainable Energy Strategy ([www.cse.org.uk/news/view/2311](http://www.cse.org.uk/news/view/2311)). This followed a similar approach to the work we'd done in 2018 for the West of England Combined Authority which was published in January 2019 ([www.cse.org.uk/news/view/2305](http://www.cse.org.uk/news/view/2305)). In March 2019 we helped to design and then facilitated the Bristol Green Capital Partnership's 200-strong city gathering on accelerating progress towards a carbon neutral Bristol (<https://bristolgreencapital.org/report-march-2019-carbon-neutral-city-gathering-published>). We captured our thinking on how to organise locally to scale up and speed up action to achieve carbon neutrality in an article for UK100, the local government leadership network for clean energy ([www.cse.org.uk/news/view/2323](http://www.cse.org.uk/news/view/2323)).

We also contribute directly to the civic life of our home city of Bristol, with senior staff acting as non-executive directors for Bristol Green Capital Partnership CIC and Bristol Energy Network CIC and participating in Bristol City Fund's Environmental Transformation Group.

## OBJECTIVE 5

### A rapidly decarbonising energy system that works for everyone

To be truly sustainable, the current energy system requires a transformation – a wholesale shift to renewable sources, much smarter demand management and system operation, and a step change in the energy performance of our buildings and energy-using appliances. This transformation must achieve these outcomes while also reflecting the social justice concerns at the heart of sustainable energy (not least to maintain public support). That means policies, regulations, market rules and associated programmes which distribute their costs and benefits fairly and provide access for, and participation by, all with appropriate support for more vulnerable people.

In 2018-19 we have been involved in many important aspects of the shift to a smarter, virtually zero carbon energy system, from practical initiatives and research into developments at local and community level, to policy advice for policy-makers and key industry players, and thought leadership on how to secure a fair transition and on the public interest issues associated with smart energy data.

The decarbonisation of heat is a vital component of transforming our energy system. Our team of data experts and software developers is making great progress in the EU-funded THERMOS project ([www.thermos-project.eu](http://www.thermos-project.eu)),



developing tools for rapid mapping and optimisation of opportunities to develop, expand or upgrade heating and cooling networks. Beta versions are in test with our UK and European partners and the latest releases will be made available more widely during 2019-20 as the project nears completion. In parallel with this, we have been updating and improving the London Heat Map for the Greater London Authority with the new version expected to be launched in summer 2019.

In Open LV, an innovation partnership with EA Technology and WPD, we have been supporting seven communities to explore how they can realise their energy ambitions using newly available data from their local electricity substations. Their ambitions ([www.cse.org.uk/news/view/2238](http://www.cse.org.uk/news/view/2238)) range from aggregating demand flexibility locally to optimising energy storage siting and management in association with a solar PV installation. The communities are all using the web app created by our software developers to enable data visualisation and analysis ([www.cse.org.uk/news/view/2257](http://www.cse.org.uk/news/view/2257)), with additional technical support from our team to test hypotheses and interpret results.

We are leading a highly experienced consortium to deliver the Next Generation Community Energy programme for Power to Change, which was launched in this year. It is providing grants and advisory support to community energy groups exploring new business models to establish viable enterprises in the emerging smart energy markets as the subsidies for future renewable energy projects come to an end, as well as providing support to communities purchasing commercial solar farms via the CORE investment programme.

In partnership with Samsung, Lancaster University and My Utility Genius, we have been exploring

how improved energy data analytics and integrated controls can stimulate better whole school energy management. The pioneering Micro:bit 'Energy-in-Schools' project is seeing promising early results. Alongside the enthusiasm and educational value of pupils using the platform to code their own energy control strategies, one Bristol primary school is expected to save £3,000 a year from the cost-saving insights provided by the programme ([www.cse.org.uk/news/view/2312](http://www.cse.org.uk/news/view/2312)).

We have been working with AD Research & Analysis to evaluate the Welsh Government's programme of eight demonstrator projects that have been set up to test out different approaches to smart living. Our year 1 evaluation report was published in July 2018 ([www.cse.org.uk/news/view/2245](http://www.cse.org.uk/news/view/2245)). It revealed valuable early lessons which were fed back to the projects to influence their project development. The second year evaluation is underway and will report in summer 2019.

Our Chief Executive, Simon Roberts OBE, has been providing advice and insights to a number of government and industry bodies, including the BEIS and Ofgem Smart Systems Forum, the National Grid Electricity System Operator RIIO-2 Stakeholder



■ THERMOS is developing tools for rapid mapping and optimisation of opportunities to develop, expand or upgrade heating and cooling networks.

Group and, from the end of the year, the Western Power Distribution Consumer Engagement Group. Our input to each is designed to ensure that government policies, regulatory practice and short and long-term grid and network business planning reflect a full appreciation of the challenges associated with determining and securing the best, most socially just path towards a smart, secure, zero carbon electricity system.

In partnership with the London-based charity, Sustainability First, we have been exploring whether and how the data being collected by the new domestic smart meters could serve the public interest. This could be by, for example, enhancing the accuracy of national energy statistics and policy modelling or providing far more fine-grain data (both spatially and temporally) to improve local energy system planning. The complex data and privacy issues involved have been illuminated and deliberated in detail through the Smart Meter Energy Data Public Interest Advisory Group which we co-convene with Sustainability First. This group involves a wide range of influential policy, regulatory, industry and consumer advocacy organisations. The findings from its first phase were published in Summer 2019 ([www.smartenergydatapiag.org.uk](http://www.smartenergydatapiag.org.uk)).

We have also provided thought leadership on the potential social justice implications of the shift to a smart energy system. A much-read article for Citizens Advice published in December 2018 explored what the widely espoused principle of 'No one left behind' means for the design and regulation of our future energy system ([www.cse.org.uk/news/view/2281](http://www.cse.org.uk/news/view/2281)). The interest stimulated has led to a newly funded programme of work for CSE exploring these issues in more depth, kicking off in Summer 2019.

## Future strategy

The trustees adopted the high-level objectives of a new three year strategy for the organisation in March 2017, as outlined above. The strategy built on our previous work but also re-articulated our strategic objectives to ensure that they (a) better describe the outcomes we are seeking to achieve, and (b) create a stronger framework for organising our resources and combining our knowledge and capabilities to maximise our impact.

Further detail was added to the strategy during the year, providing a more detailed strategic work programme adopted by trustees in October 2018. This reflects the changing context for our work and

a review by senior staff of how our work should develop to best secure progress towards each objective.

The strategy identifies a number of risks and uncertainties, including: the political and economic uncertainties created by Brexit; the extent of political will at national level to drive deeper action on both tackling climate change and cutting fuel poverty; and the potential for tightening constraints on future funding, particularly for key partners such as local authorities and health bodies.

It also describes new developments which create opportunities for greater influence and impact. These include the rapid emergence of technologies and services that enable far smarter management of our energy system. In addition, the growing body of evidence that, given the right stimulus and support at a very local level, people devise

achievable low carbon futures and develop an understanding of, and consent for, the changes needed to realise them.

We anticipate continuing challenges in securing funding, particularly for our core work supporting growing numbers of vulnerable households. In response, we have dedicated more effort to building deeper relationships with funders and have developed improved systems to track our impact and communicate real stories about how our work has changed clients' lives. As a result, we have been able to grow our income and activity levels while maintaining a strong strategic focus in our work.

We are using our 40th anniversary in 2019 to celebrate our impact, share our plans for the future and nurture existing and future partnerships and funding relationships.

## Funders & clients



In 2018-19, CSE successfully secured £2.72m for its activities from national and local government and associated agencies, industry and charitable sources. Some activities were grant funded, whilst others were paid as project or consultancy services. In addition, some funding came via project partners with whom we jointly developed successful funding proposals to a third party.

All of CSE's activities are designed to meet CSE's charitable purposes, irrespective of funding source or contractual arrangements. The trustees would like to thank CSE's funding partners and clients for their support for projects undertaken during the year, including:

Affordable Warmth Solutions  
(National Grid Warm Homes Fund)  
AD Research & Analysis  
Arcadia  
Austin and Hope Pilkington  
Charitable Foundation  
Barrow Cadbury Trust  
Bath & North East Somerset Council  
Bath & West Community Energy  
Fund

Big Lottery Fund (Reaching  
Communities)  
Big Lottery Fund (Awards for All)  
Bridgend County Borough Council  
Bristol City Council  
Bristol Energy  
Burnham and Weston Energy CIC  
Cadent Gas  
CAG Consultants  
Citizens Advice





# Financial review

These accounts cover the 12 month period from April 2018 to March 2019. In the period, the organisation made a surplus of £162,384 on its income of £2.72m (deficit of £87,256 on an income of £2.02m in 2017-18).

This surplus takes account of a planned investment from our reserves of £67,265 during the year into our advice services so that we can maintain a free service and keep our energy advice resources up to date (see Reserves Policy overleaf).

This record level of turnover, 35% up on last year, reflects the organisation's success in recent years in raising funds to support strategically valuable initiatives. This

has driven a growth in staff numbers from 48 to 53 to deliver these projects which, combined with tight control of overheads, has enabled the generation of a healthy surplus in the year. We have enjoyed high levels of staff retention and achieved good productivity, buoyed by the better working environment of our new offices in central Bristol (the move to which in December 2017 at the end of our previous lease was a significant contributor to last year's deficit).

We continue to enjoy excellent debt recovery levels. Our creditors are dominated by deferred income which includes payments in advance of funded or contracted work being undertaken.

At the end of the year, our reserves (total unrestricted funds) stood at £780,602 (31 March 2018: £618,218), in excess of our minimum reserves target (see Reserves Policy overleaf).

Citizens Advice Scotland  
Committee on Climate Change  
Cranfield Trust  
Department for Business, Energy & Industrial Strategy (BEIS)  
Dorset County Council  
EA Technology  
Electricity North West Ltd  
Energy Saving Trust (Ofgem Energy Redress Scheme)  
Esmee Fairbairn Foundation  
European Commission (Horizon 2020)  
European Commission (Sustainable Urbanisation Global Initiative)  
Evolve Home Energy Solutions  
Frank Litchfield Charitable Trust  
Friends Provident Foundation  
Gloucestershire County Council

Greater London Authority  
Innovate UK  
Joseph Rowntree Charitable Trust  
Joseph Rowntree Foundation  
Mendip District Council  
National Energy Action  
National Grid Electricity System Operator  
Ofgem  
Ovo Energy  
Power to Change  
Royal Society of Wildlife Trusts  
Samsung Electronics UK Ltd  
Scottish Government  
Scottish and Southern Energy Networks  
Sedgemoor District Council  
Smart Energy GB  
South Gloucestershire Council

South Somerset District Council  
SP Energy Networks  
Swindon Borough Council  
Taunton Deane Borough Council  
TDS Charitable Foundation  
Thrive Renewables Plc  
Two Rivers Housing  
UK Power Networks  
University College London  
University of Edinburgh (ClimateXChange)  
University of Nottingham  
Wales and West Utilities  
Welsh Government  
West of England Combined Authority  
Wessex Water Services Ltd  
Western Power Distribution plc  
Wiltshire Council

# Structure, governance & management

## Constitution

The Centre for Sustainable Energy (CSE) is a registered charity and company limited by guarantee, having no share capital. CSE's Memorandum and Articles of Association are the primary governing documents of the charity.

## Policies & structure

The charity operates with a Board of Trustees that meets quarterly. In addition, the Board has established a Finance Committee and a Human Resources Committee which also meet and report to the Board, in accordance with their terms of reference.

The trustees have overall responsibility for financial management, organisational strategy and compliance with the purposes of the charity. This responsibility is devolved within a clearly documented framework of delegated powers to the Chief Executive and Senior Management Team. The Senior Management Team maintains

and implements the policies of the organisation, including during 2018-19 the implementation of the new GDPR data protection rules. The Chief Executive reports to the trustees at each quarterly meeting.

## Pay policy for senior staff

All staff at CSE are paid according to a graded salary scale which was established by the organisation to reflect the differences in responsibility, skills and capabilities required in various roles. The pay differentials between grades were established in the scale through a combination of job evaluation and an assessment of market rates for similar roles in similar organisations. They are reviewed occasionally with changes subject to agreement by trustees. The ratio between the salaries of the highest and lowest paid members of staff (our interns) is currently less than 4.5.

Performance appraisal and remuneration policies and practices are being reviewed (with support from The Cranfield Trust), with changes expected to be implemented in early 2019-20.

All staff are entitled to participate in the CSE contributory pension scheme (8% employer's contribution, 6% employee contribution) which has also been adopted as our auto-enrolment scheme since November 2015.

## Public benefit

CSE has complied with the duty in Section 17(5) of the Charities Act 2011 to have due regard to public benefit guidance published by the Charities Commission.

## Our trustees

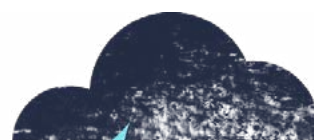
We were very pleased to welcome four new trustees to the Board in October 2018 following an open and competitive recruitment process. Dr Jane Dennett-Thorpe, William Gillis, Felicity Jones and Shantha Shanmugalingam bring valuable experience from the public, charitable and commercial sectors. Brief biographies can be found at [www.cse.org.uk/trustees](http://www.cse.org.uk/trustees).

Dr Brenda Boardman and Professor Catherine Mitchell both stood down as trustees in October 2018. They will continue to provide the policy advice to CSE which has been central to their highly valued contributions to the organisation as trustees for more than 16 years.

We were delighted by the news that our Chair of Trustees, Anne Obey, whose day job is Director of Financial Reporting at Nationwide Building Society, received an OBE in the New Year's Honours List for "services to financial reporting and to sustainable energy".







## Reserves Policy

Our reserves policy takes account of: (a) the liabilities which would be faced by the charity if it were to cease operating; (b) the financial 'cushion' it would need in order to have time to respond to a serious but possible funding crisis without immediately losing valuable staff capacity, and; (c) any longer-term objectives which might require significant investment.

Following a fresh assessment of each of these factors by trustees in October 2018, and taking

particular account of the lease for our new offices (since late 2017), the target for our reserves (i.e. total unrestricted funds) was increased from £500,000 to £570,000. An additional condition was also adopted; that the organisation should hold a minimum of £400,000 in net current assets (i.e. free reserves) in order to provide the intended financial 'cushion'.

At the end of March 2019, our total unrestricted funds were in excess of this figure, standing at £780,602 (with £653,664 in net current assets). These reserves are principally current assets, mainly cash. All cash reserves are held in an interest-bearing bank deposit account to minimise risk.

The policy and target is regularly reviewed by trustees to take account of the development and growth of the organisation and a review of the changing risks it faces, particularly with respect to securing funding.

With the reserves above the target (and meeting the new additional 'free reserves' condition), the trustees have committed to making a further modest annual investment (up to £70,000) from the reserves in 2019-20 to support our core energy advice services.

## Risk management

The Board of Trustees has assessed the major risks to which CSE is exposed, in particular those related to the operations and finances of CSE, and is satisfied that systems and procedures are in place to mitigate exposure to the major risks. This was a central element of our processes for developing our new strategy and is a routine consideration in the annual budget setting process.

A full risk review undertaken by the board in January 2019 identified the key risks for the immediate future as: (a) the continuation of adequate funding to enable the organisation to deliver its strategy and thrive in the process; (b) the risk that staff fail to keep up with knowledge and

market developments in what is a fast-changing policy and technical environment, leading to weaker insights and getting 'behind the curve' in innovation and service design and delivery, and; (c) maintaining productivity levels amongst staff to ensure we can deliver our income targets and cover modestly higher costs for our new accommodation and the awarded increase in salaries.

In relation to the first, the improvements in our development (i.e. fundraising) processes put in place since April 2016 have continued to produce positive results in terms of securing income for strategically relevant initiatives. Fundraising activity and success rates are reviewed at every quarterly meeting of the Board of trustees.

On the second, we have undertaken (with support from The Cranfield Trust) an overhaul of our appraisal process to ensure it focuses more

effectively on staff development and support to maintain and develop subject knowledge and associated capabilities. We are planning to stimulate more staff-led study on smart energy systems and associated policy issues in 2019.

On sustaining high levels of staff productivity, we have improved our reporting and monitoring of staff performance (including self-monitoring) and communicated to all staff the additional impact we achieve when we're at our most productive. Productivity levels throughout 2018-19 were consistently higher than previous years.

### Related parties

As detailed in note 20 to the accounts

## Trustees' responsibilities statement

The Trustees (who are also directors of Centre for Sustainable Energy for the purposes of company law) are responsible for preparing the Trustees' Report and the financial statements in accordance with applicable law and United Kingdom Accounting Standards (United Kingdom Generally Accepted Accounting Practice).

Company law requires the Trustees to prepare financial statements for each financial year. Under company law the Trustees must not approve the financial statements unless they are satisfied that they give a true and fair view of the state of affairs of the charitable company and of the incoming resources and application of resources, including the income and expenditure, of the charitable company for that period. In preparing these financial statements, the Trustees are required to:

- Select suitable accounting policies and then apply them consistently.
- Observe the methods and principles in the Charities SORP.
- Make judgments and accounting estimates that are reasonable and prudent.
- State whether applicable UK Accounting Standards have been followed, subject to any material departures disclosed and explained in the financial statements.
- Prepare the financial statements on the going concern basis unless it is inappropriate to presume that the charitable company will continue in operation.

The Trustees are responsible for keeping adequate accounting records that are sufficient to show and explain the charitable company's transactions and disclose with reasonable accuracy at any time the financial position of the charitable company

and enable them to ensure that the financial statements comply with the Companies Act 2006. They are also responsible for safeguarding the assets of the charitable company and hence for taking reasonable steps for the prevention and detection of fraud and other irregularities.

The Trustees are responsible for the maintenance and integrity of the corporate and financial information included on the charitable company's website. Legislation in the United Kingdom governing the preparation and dissemination of financial statements may differ from legislation in other jurisdictions.

### Disclosure of information to auditors

Each of the persons who are Trustees at the time when this Trustees' Report is approved has confirmed that:

- So far as that Trustee is aware, there is no relevant audit information of which the charitable company's auditors are unaware, and
- That Trustee has taken all the steps that ought to have been taken as a Trustee in order to be aware of any relevant audit information and to establish that the charitable company's auditors are aware of that information.

This report was approved by the Trustees on 11 July 2019 and signed on their behalf by Chair of Trustees, Anne Obey.



## Independent auditors' report to the members of Centre for Sustainable Energy

### Opinion

We have audited the financial statements of Centre for Sustainable Energy (the 'charity') for the year ended 31 March 2019 which comprise the Statement of Financial Activities incorporating Income and Expenditure Account, the Balance Sheet, the Statement of Cash Flows and the related notes, including a summary of significant accounting policies. The financial reporting framework that has been applied in their preparation is applicable law and United Kingdom Accounting Standards, including Financial Reporting Standard 102 'The Financial Reporting Standard applicable in the UK and Republic of Ireland' (United Kingdom Generally Accepted Accounting Practice).

In our opinion the financial statements:

- Give a true and fair view of the state of the charitable company's affairs as at 31 March 2019 and of its incoming resources and application of resources, including its income and expenditure for the year then ended;
- Have been properly prepared in accordance with United Kingdom Generally Accepted Accounting Practice; and
- Have been prepared in accordance with the requirements of the Companies Act 2006.

### Basis for opinion

We conducted our audit in accordance with International Standards on Auditing (UK) (ISAs (UK)) and applicable law. Our responsibilities under those standards are further described in the Auditors' responsibilities for the audit of the financial statements section of our report. We are independent of the charitable company in accordance with the ethical requirements that are relevant to our audit of the financial statements in the United Kingdom, including the Financial Reporting Council's Ethical Standard, and we have fulfilled our other ethical responsibilities in accordance with these requirements. We believe that the audit evidence we have obtained is sufficient and appropriate to provide a basis for our opinion.



### Conclusions relating to going concern

We have nothing to report in respect of the following matters in relation to which the ISAs (UK) require us to report to you where:

- The Trustees' use of the going concern basis of accounting in the preparation of the financial statements is not appropriate; or
- The Trustees have not disclosed in the financial statements any identified material uncertainties that may cast significant doubt about the charitable company's ability to continue to adopt the going concern basis of accounting for a period of at least twelve months from the date when the financial statements are authorised for issue.

### Other information

The Trustees are responsible for the other information. The other information comprises the information included in the Annual Report, other than the financial statements and our Auditors' Report thereon. Our opinion on the financial statements does not cover the other information and, except to the extent otherwise explicitly stated in our report, we do not express any form of assurance conclusion thereon.

In connection with our audit of the financial statements, our responsibility is to read the other information and, in doing so, consider whether the other information is materially inconsistent with the financial statements or our knowledge obtained in the audit or otherwise appears

to be materially misstated. If we identify such material inconsistencies or apparent material misstatements, we are required to determine whether there is a material misstatement in the financial statements or a material misstatement of the other information. If, based on the work we have performed, we conclude that there is a material misstatement of this other information, we are required to report that fact.

We have nothing to report in this regard.

### Opinion on other matters pre-scribed by the Companies Act 2006

In our opinion, based on the work undertaken in the course of the audit:

- The information given in the Trustees' Report for the financial year for which the financial statements are prepared is consistent with the financial statements.
- The Trustees' Report has been prepared in accordance with applicable legal requirements.

### Matters on which we are required to report by exception

In the light of our knowledge and understanding of the charitable company and its environment obtained in the course of the audit, we have not identified material misstatements in the Trustees' Report.

We have nothing to report in respect of the following matters in relation to which the Companies Act 2006 requires us to report to you if, in our opinion:

- Adequate accounting records have not been kept, or returns adequate for our audit have not been received from branches not visited by us; or
- The financial statements are not in agreement with the accounting records and returns; or
- Certain disclosures of Trustees' remuneration specified by law are not made; or
- We have not received all the information and explanations we require for our audit; or
- The Trustees were not entitled to prepare the financial statements in accordance with the small companies regime and take advantage of the small companies' exemptions in preparing the Trustees' Report and from the requirement to prepare a Strategic Report.

### Responsibilities of Trustees

As explained more fully in the Trustees' Responsibilities Statement, the Trustees (who are also the directors of the charity for the purposes of company law) are responsible for the preparation of the financial statements and for being satisfied that they give a true and fair view, and for such internal control as the Trustees determine is necessary to enable the preparation of financial statements that are free from material misstatement, whether due to fraud or error.

In preparing the financial statements, the Trustees are responsible for assessing the charitable company's ability to continue as a going concern, disclosing, as applicable, matters related to going concern and using the going concern basis of accounting unless the Trustees either intend to liquidate the charitable company or to cease operations, or have no realistic alternative but to do so.

### Auditors' responsibilities for the audit of the financial statements

Our objectives are to obtain reasonable assurance about whether the financial statements as a whole are free from material misstatement, whether due to fraud or error, and to issue an Auditors' Report that includes our opinion. Reasonable assurance is a high level of assurance, but is not a guarantee that an audit conducted in accordance with ISAs (UK) will always detect a material misstatement when it exists.

Misstatements can arise from fraud or error and are considered material if, individually or in the aggregate, they could reasonably be expected to influence the economic decisions of users taken on the basis of these financial statements.

A further description of our responsibilities for the audit of the financial statements is located on the Financial Reporting Council's website at: [www.frc.org.uk/auditorsresponsibilities](http://www.frc.org.uk/auditorsresponsibilities).

This description forms part of our Auditors' Report.

David Butler FCA DChA (Senior Statutory Auditor) for and on behalf of

**Bishop Fleming LLP**  
Chartered Accountants,  
Statutory Auditors,  
16 Queen Square,  
Bristol BS1 4NT

### Use of our report

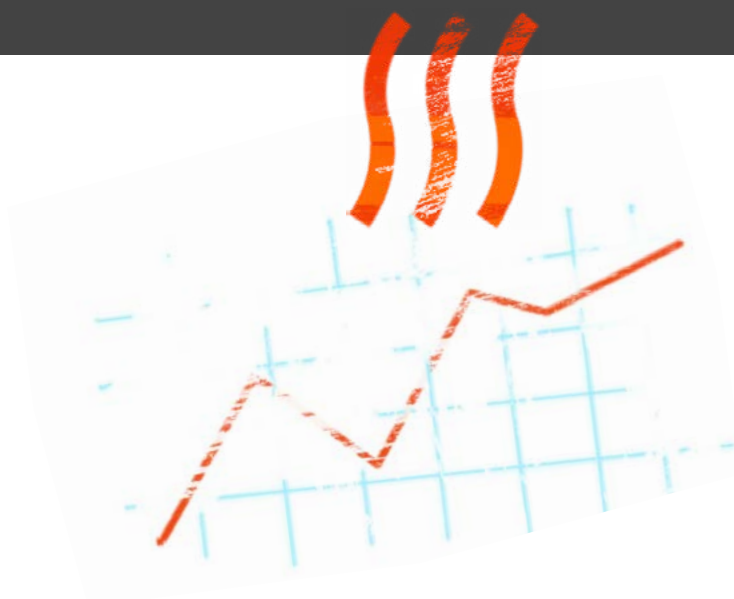
This report is made solely to the charitable company's members, as a body, in accordance with Chapter 3 of Part 16 of the Companies Act 2006. Our audit work has been undertaken so that we might state to the charitable company's members those matters we are required to state to them in an Auditors' Report and for no other purpose.

To the fullest extent permitted by law, we do not accept or assume responsibility to anyone other than the charitable company and its members, as a body, for our audit work, for this report, or for the opinions we have formed.

## Statement of financial activities

	Unrestricted funds 2019 (£)	Restricted funds 2019 (£)	Total funds 2019 (£)	Total funds 2018 (£)
<b>Income from</b>				
Charitable activities ( <a href="#">note 2</a> )	1,707,411	1,015,760	2,723,171	2,019,943
<b>Total income</b>	1,707,411	1,015,760	2,723,171	2,019,943
<b>Expenditure on:</b>				
Charitable activities ( <a href="#">notes 3 &amp; 6</a> )	1,545,027	1,015,760	2,560,787	2,107,199
<b>Total expenditure (<a href="#">note 4</a>)</b>	1,545,027	1,015,760	2,560,787	2,107,199
<b>Net income/(expenditure) before other recognised gains and losses</b>	162,384	-	162,384	(87,256)
<b>Income/(expenditure) and net movement in funds</b>	162,384	-	162,384	(87,256)
<b>Reconciliation of funds:</b>				
Total funds brought forward	618,218	-	618,218	705,474
<b>Total funds carried forward</b>	780,602	-	780,602	618,218

■ The notes on pages 24 to 34 form part of these financial statements.

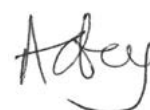




## Balance sheet as at 31 March 2019

	2019 £	2019 £	2018 £	2018 £
<b>Fixed assets</b>				
Tangible assets (note 10)		126,938		122,169
<b>Current assets</b>				
Debtors (note 11)	844,424		552,501	
Cash at bank and in hand	483,466		480,017	
	1,327,890		1,032,518	
<b>Creditors: amounts falling due within one year (note 12)</b>	(674,226)		(536,469)	
<b>Net current assets</b>		653,664		496,049
<b>Net assets</b>		780,602		618,218
<b>Charity funds</b>				
Unrestricted funds (note 14)		780,602		618,218
<b>Total funds</b>		780,602		618,218

These financial statements have been prepared in accordance with the provisions applicable to companies subject to the small companies regime. They were approved and authorised for issue by the trustees on 11 July 2019 and signed on their behalf, by Anne Obey, trustee.



## Statement of cash flows

	2019 (£)	2018 (£)
<b>Cash flows from operating activities</b>		
Net cash provided by/(used in) operating activities (note 16)	32,869	(72,217)
<b>Cash flows from investing activities:</b>		
Purchase of tangible assets	(29,420)	(120,750)
<b>Net cash used in investing activities</b>	(29,420)	(120,750)
<b>Change in cash and cash equivalents in the year</b>	3,449	(192,967)
Cash and cash equivalents brought forward	480,017	672,984
<b>Cash and cash equivalents carried forward (note 17)</b>	483,466	480,017

## NOTE 1. Accounting policies

### 1.01 Basis of preparation of financial statements

The financial statements have been prepared in accordance with Accounting and Reporting by Charities: Statement of Recommended Practice applicable to charities preparing their accounts in accordance with the Financial Reporting Standard applicable in the UK and Republic of Ireland (FRS 102) (effective 1 January 2015) - (charities SORP (FRS 102)), the Financial Reporting Standard applicable in the UK and Republic of Ireland (FRS 102) and the Companies Act 2006.

Centre for Sustainable Energy meets the definition of a public benefit entity under FRS 102. Assets and liabilities are initially recognised at historical cost or transaction value unless otherwise stated in the relevant accounting policy.

### 1.02 Company status

The charity is a company limited by guarantee. The members of the company are the Trustees named on page 1. In the event of the charity being wound up, the liability in respect of the guarantee is limited to £1 per member of the charity. The charity's registered office is: St. James Court, St. James Parade, Bristol BS1 3IH.

### 1.03 Fund accounting

General funds are unrestricted funds which are available for use at the discretion of the Trustees in furtherance of the general objectives of the charity and which have not been designated for other purposes.

Designated funds comprise unrestricted funds that have been set aside by the Trustees for particular purposes. The aim and use of each designated fund is set out in the notes to the financial statements.

Restricted funds are funds which are to be used in accordance with specific restrictions imposed by donors or which have been raised by the charity for particular purposes. The costs of

raising and administering such funds are charged against the specific fund. The aim and use of each restricted fund is set out in the notes to the financial statements.

### 1.04 Income

All income is recognised once the charity has entitlement to the income, it is probable that the income will be received and the amount of income receivable can be measured reliably.

Contractual income is recognised in the statement of financial activities to the extent that the charity has provided the services. Where contractual income is received in advance but the charity has not provided the relevant services then this income is deferred.

### 1.05 Expenditure

Expenditure is recognised once there is a legal or constructive obligation to transfer economic benefit to a third party, it is probable that a transfer of economic benefits will be required in settlement and the amount of the obligation can be measured reliably. Expenditure is classified by activity. The costs of each activity are made up of the total of direct costs and shared costs, including support costs involved in undertaking each activity. Direct costs attributable to a single activity are allocated directly to that activity. Shared costs which contribute to more than one activity and support costs which are not attributable to a single activity are apportioned between those activities on a basis consistent with the use of resources. Central staff costs are allocated on the basis of time spent, and depreciation charges allocated on the portion of the asset's use.

Charitable activities and Governance costs are costs incurred on the charity's operations, including support costs and costs relating to the governance of the charity apportioned to charitable activities.

All expenditure is inclusive of irrecoverable VAT.

### 1.06 Tangible fixed assets and depreciation

All assets costing more than £500 are capitalised.

A review for impairment of a fixed asset is carried out if events or changes in circumstances indicate that the carrying value of any fixed asset may not be recoverable. Shortfalls between the carrying value of fixed assets and their recoverable amounts are recognised as impairments. Impairment losses are recognised in the statement of financial activities incorporating income and expenditure account.

Tangible fixed assets are carried at cost, net of depreciation and any provision for impairment. Depreciation is provided at rates calculated to write off the cost of fixed assets, less their estimated residual value, over their expected useful lives on the following bases: leasehold improvements, over the life of the lease; fixtures and fittings, 4-5 years; office equipment, 2-4 years; project assets, over the life of the project.

### 1.07 Operating leases

Rentals under operating leases are charged to the statement of financial activities on a straight line basis over the lease term.

### 1.08 Interest receivable

Interest on funds held on deposit is included when receivable and the amount can be measured reliably by the charity; this is normally upon notification of the interest paid or payable by the bank.

### 1.09 Debtors

Trade and other debtors are recognised at the settlement amount after any trade discount offered. Prepayments are valued at the amount prepaid net of any trade discounts due.

Cont ...



**NOTE 1 (CONTINUED). Accounting policies****1.10 Cash at bank and in hand**

Cash at bank and in hand includes cash and short term highly liquid investments with a short maturity of three months or less from the date of acquisition or opening of the deposit or similar account.

**1.11 Liabilities and provisions**

Liabilities are recognised when there is an obligation at the Balance Sheet date as a result of a past event, it is probable that a transfer of economic benefit will be required in settlement, and the amount of the settlement can be estimated reliably. Liabilities are recognised at the amount that the

charity anticipates it will pay to settle the debt or the amount it has received as advanced payments for the goods or services it must provide. Provisions are measured at the best estimate of the amounts required to settle the obligation. Where the effect of the time value of money is material, the provision is based on the present value of those amounts, discounted at the pre-tax discount rate that reflects the risks specific to the liability. The unwinding of the discount is recognised within interest payable and similar charges.

**1.12 Financial instruments**

The charity only has financial assets and financial liabilities of a kind that

qualify as basic financial instruments. Basic financial instruments are initially recognised at transaction value and subsequently measured at their settlement value with the exception of bank loans which are subsequently measured at amortised cost using the effective interest method.

**1.13 Pensions**

The charity operates a defined contribution pension scheme and the pension charge represents the amounts payable by the charity to the fund in respect of the year.

**NOTE 2. Income from charitable activities**

	Unrestricted funds 2019 (£)	Restricted funds 2019 (£)	Total funds 2019 (£)	Total funds 2018 (£)
Research and analysis	654,525	195,683	850,208	784,425
Household energy services	687,250	433,094	1,120,344	854,748
Local and community empowerment	365,636	386,983	752,619	380,770
<b>Total 2019</b>	<b>1,707,411</b>	<b>1,015,760</b>	<b>2,723,171</b>	2,019,943
Total 2018	1,113,128	906,815	2,019,943	

**NOTE 3. Analysis of expenditure on charitable activities**

	Unrestricted funds 2019 (£)	Restricted funds 2019 (£)	Total funds 2019 (£)	Total funds 2018 (£)
Research and analysis	540,191	195,683	735,874	811,557
Household energy services	644,906	433,094	1,078,000	913,206
Local and community empowerment	343,839	386,983	730,822	359,980
<b>Total 2019</b>	<b>1,528,936</b>	<b>1,015,760</b>	<b>2,544,696</b>	2,084,743
Total 2018	1,177,928	906,815	2,084,743	

**NOTE 4. Analysis of expenditure by expenditure type**

	Staff costs 2019 (£)	Depreciation 2019 (£)	Other costs 2019 (£)	Total 2019 (£)	Total 2018 (£)
Research and analysis	540,343	9,450	186,081	735,874	811,557
Household energy services	814,564	9,923	253,513	1,078,000	913,206
Local and community empowerment	386,667	5,279	338,876	730,822	359,980
<b>Charitable activities</b>	<b>1,741,574</b>	<b>24,652</b>	<b>778,470</b>	<b>2,544,696</b>	<b>2,084,743</b>
<b>Expenditure on governance</b>	<b>-</b>	<b>-</b>	<b>16,091</b>	<b>16,091</b>	<b>22,456</b>
<b>Total 2019</b>	<b>1,741,574</b>	<b>24,652</b>	<b>794,561</b>	<b>2,560,787</b>	<b>2,107,199</b>
Total 2018	1,513,847	18,424	574,928	2,107,199	

**NOTE 5. Analysis of expenditure by activities**

	Activities undertaken directly 2019 (£)	Support costs 2019 (£)	Total funds 2019 (£)	Total funds 2018 (£)
Research and analysis	613,336	122,538	735,874	811,557
Household energy services	949,337	128,663	1,078,000	913,206
Local and community empowerment	662,371	68,451	730,822	359,980
<b>Total 2019</b>	<b>2,225,044</b>	<b>319,652</b>	<b>2,544,696</b>	<b>2,084,743</b>
Total 2018	1,781,887	302,856	2,084,743	

**NOTE 6. Governance costs**

	Unrestricted funds 2019 (£)	Restricted funds 2019 (£)	Total funds 2019 (£)	Total funds 2018 (£)
Auditors' remuneration	5,850	-	5,850	5,150
Costs of Trustees' meetings	1,411	-	1,411	393
Professional fees	8,830	-	8,830	16,913
	<b>16,091</b>	<b>-</b>	<b>16,091</b>	<b>22,456</b>

**NOTE 7. Net income/(expenditure)**

	2019 (£)	2018 (£)
<i>This is stated after charging:</i>		
Depreciation of tangible fixed assets - owned by the charity	24,651	18,224
Auditors' remuneration - audit	5,850	5,150

■ During the year, no Trustees received any remuneration (2018: £Nil) or any benefits in kind (2018: £Nil) or any reimbursement of expenses (2018: £Nil)



**NOTE 8. Auditors' remuneration**

The Auditor's remuneration amounts to an audit fee of £5,850 (2018 - £5,150), and non-audit service fees of £Nil (2018 - £Nil).

**NOTE 9. Staff costs**

	2019 (£)	2018 (£)
Wages and salaries	1,504,371	1,324,120
Social security costs	128,043	104,300
Other pension costs	109,160	85,427
	<b>1,741,574</b>	<b>1,513,847</b>

- The average monthly number of employees during the year was 53 (2018: 48) of which 49 were project staff (2018: 44) and 4 were management and admin staff (2018: 4).
- Average headcount expressed as a full time equivalent: 47 (2018: 42).
- The number of higher paid employees (total remuneration) in the band £70,001-£80,000 was 1 (2018: 1 employee in the band £60,001-£70,000).
- The total employee benefits of key management personnel were £402,104 (2018: £378,350).
- Total employer contributions for the provision of defined contribution pension schemes in respect of employees earning more than £60,000 were £8,358 (2018: £8,110). This amount is included in the banding above.

**NOTE 10. Tangible fixed assets**

	Leasehold improvements (£)	Fixtures & fittings (£)	Office equipment (£)	Project assets (£)	Total (£)
<b>Cost</b>					
At 1 April 2018	155,447	8,168	121,536	1,569	286,720
Additions	1,961	1,620	25,839	-	29,420
At 31 March 2019	157,408	9,788	147,375	1,569	316,140
<b>Depreciation</b>					
At 1 April 2018	53,000	7,339	102,643	1,569	164,551
Charge for the year	10,624	889	13,138	-	24,651
At 31 March 2019	63,624	8,228	115,781	1,569	189,202
<b>Net book value</b>					
At 31 March 2019	93,784	1,560	31,594	-	126,938
At 31 March 2018	102,447	829	18,893	-	122,169

**NOTE 11. Debtors**

	2019 (£)	2018 (£)
Trade debtors	356,395	245,943
Prepayments and accrued income	488,029	306,558
	<b>844,424</b>	<b>552,501</b>

**NOTE 12. Creditors: amounts falling due within one year**

	2019 (£)	2018 (£)
Trade creditors	77,052	45,128
Other taxation and social security	134,493	109,729
Other creditors	25,514	19,012
Accruals and deferred income	437,167	362,600
	<b>674,226</b>	<b>536,469</b>

■ Included within accruals and deferred income is a balance of £20,415 (2018: £Nil) in relation to Community Energy for Everyone from the Joseph Rowntree Charitable Trust.

	£
<b>Deferred income</b>	
Deferred income at 1 April 2018	302,711
Resources deferred during the year	339,069
Amounts released from previous years	(302,711)
<b>Deferred income at 31 March 2019</b>	<b>339,069</b>

**NOTE 13. Financial instruments**

	2019 (£)	2018 (£)
<b>Financial assets measured at amortised cost</b>		
Trade debtors	356,395	245,943
Accrued income	433,200	275,833
Cash at bank and in hand	483,466	506,155
	<b>1,273,061</b>	<b>1,027,931</b>
	<b>2019 (£)</b>	<b>2018 (£)</b>
<b>Financial liabilities measured at amortised cost</b>		
Trade creditors	77,052	45,150
Cash at bank and in hand	5,984	944
Accruals	98,098	39,739
	<b>181,134</b>	<b>85,833</b>



**NOTE 14. Statement of funds**

	Balance (£) at 1 April 2018	Income (£)	Expenditure (£)	Balance (£) at 31 March 2019
<b>Designated funds</b>				
Strategic Investment Reserve	326	-	-	326
<b>General funds</b>				
General funds	617,892	1,707,411	(1,545,027)	780,276
Total unrestricted funds	618,218	1,707,411	(1,545,027)	780,602
<b>Restricted funds</b>				
BEIS MEES Pilot	-	8,934	(8,934)	-
BESN 18-19	-	22,385	(22,385)	-
BESN Bristol 17-18	-	163	(163)	-
BESN NEA 2017	-	77	(77)	-
Bright Green Future (Big Lottery Fund Grant)	-	270,601	(270,601)	-
Bringing Local Energy Benefits to Deprived Communities	-	5,798	(5,798)	-
Building Capacity for Energy Resilience (FPF)	-	32,793	(32,793)	-
Community-led Fuel Poverty Initiatives	-	3,060	(3,060)	-
Community Consent for Low Carbon Future (EFF)	-	63,504	(63,504)	-
Community Energy for Everyone (JRCT)	-	9,517	(9,517)	-
Door-to-Door Radstock	-	4,156	(4,156)	-
EASE (Big Lottery Fund Grant)	-	85,978	(85,978)	-
FEWULL	-	4,510	(4,510)	-
Futureproof	-	93,827	(93,827)	-
Get ready for MEES	-	6,141	(6,141)	-
HEART	-	1,055	(1,055)	-
Home Visit Plus	-	8,886	(8,886)	-
One Worry Less 2018 (OWL)	-	4,918	(4,918)	-
OPEN	-	4,398	(4,398)	-
PIAB - AFA	-	1,710	(1,710)	-
Smart & Easy Energy	-	399	(399)	-
Community Consent for Low Carbon Future	-	5,751	(5,751)	-
Smart & Snug	-	6,848	(6,848)	-
Warm Home Wiltshire	-	5,000	(5,000)	-
THERMOS (EC Horizon 2020)	-	177,511	(177,511)	-
Warm & Safe Wiltshire	-	32,953	(32,953)	-
Warm Home Wiltshire	-	36,721	(36,721)	-
Warmer Homes Advice & Money (WHAM)	-	98,339	(98,339)	-
WHAM Fuel good fund	-	7,406	(7,406)	-
WPD Redress Evaluation	-	12,421	(12,421)	-
	-	1,015,760	(1,015,760)	-
<b>Total of funds</b>	<b>618,218</b>	<b>2,723,171</b>	<b>(2,560,787)</b>	<b>780,602</b>

**NOTE 14 (CONTINUED). Statement of funds - prior year**

	Balance (£) at 1 April 2018	Income (£)	Expenditure (£)	Balance (£) at 31 March 2019
Strategic Investment Reserve	326	-	-	326
General funds	705,148	1,113,128	(1,200,384)	617,892
<b>Restricted funds</b>				
Usmartconsumer (Intelligent Energy Europe)	-	(11,230)	11,230	-
BESN Champions 2016-17 (BEIS)	-	95	(95)	-
Affordable Energy Access (Comic Relief)	-	20,293	(20,293)	-
Bristol Smart Energy City Collaboration (Ashden Trust, JJ Charitable Trust, Mark Leonard Trust)	-	10,433	(10,433)	-
EASE (Big Lottery Fund Grant)	-	135,104	(135,104)	-
Warm & Healthy Wiltshire (British Gas Energy Trust)	-	7,375	(7,375)	-
Bright Green Future (Big Lottery Fund Grant)	-	156,711	(156,711)	-
JRF Smart Metering for Vulnerable Households	-	2,284	(2,284)	-
CIFF Paper	-	13	(13)	-
THERMOS (EC Horizon 2020)	-	148,416	(148,416)	-
JRF Smart Metering for Vulnerable Households	-	66,987	(66,987)	-
WOE Families in Fuel Crisis (Scottish Power Energy People Trust)	-	22,445	(22,445)	-
Building Capacity for Energy Resilience (Friends Provident Foundation)	-	40,537	(40,537)	-
Bringing Local Energy Benefits to Deprived Communities	-	18,766	(18,766)	-
WPD Redress Evaluation	-	10,979	(10,979)	-
Warm & Safe Wiltshire	-	45,125	(45,125)	-
Home Visit Plus	-	33,535	(33,535)	-
Smart & Snug	-	45,740	(45,740)	-
Warmer Homes Advice & Money (WHAM)	-	66,084	(66,084)	-
Smart & Easy Energy	-	4,581	(4,581)	-
Get ready for MEES	-	6,095	(6,095)	-
BESN NEA 2017	-	4,923	(4,923)	-
BESN Bristol 17-18	-	9,837	(9,837)	-
One Worry Less 2018 (OWL)	-	82	(82)	-
OPEN	-	602	(602)	-
Door-to-Door Radstock	-	84	(84)	-
Community Energy for Everyone (JRCT)	-	(4,557)	4,557	-
CLFPI	-	33,827	(33,827)	-
Community Consent for Low Carbon Future (EFF)	-	29,401	(29,401)	-
Project in a box AFA	-	2,248	(2,248)	-
<b>Total of funds</b>	<b>-</b>	<b>906,815</b>	<b>(906,815)</b>	<b>-</b>



**NOTE 14 (CONTINUED). Statement of funds****Designated funds**

The Strategic Investment Reserve has been set up by the Trustees in order to support agreed projects that would otherwise not receive funding but which the Trustees consider will enhance the organisation's impact and future prospects.

**Restricted funds**

The significant restricted funds are explained below:

**BEIS MEES Pilot (BEIS):** Pilot to raise awareness of, and compliance with Minimum Energy Efficiency standards for private, rented, domestic properties in Bristol.

**BESN Bristol 2018-19 (BEIS):** Energy Champions supporting fuel poor and vulnerable households to get the best deal from their energy supplier and save money on their bills across the South West.

**Bright Green Future (Big Lottery Fund Grant):** a programme to engage and train young people aged 15-19, to get involved in energy and sustainability with a view to them embarking on a future career in the sector.

**Bringing Local Energy Benefits to Deprived Communities (Barrow Cadbury Trust):** developing policy and practice recommendations for supporting more community energy projects in low income communities.

**Building capacity for energy resilience (Friends Provident Foundation):** building capacity for energy resilience in deprived areas.

**Community Led Fuel Poverty Initiatives (WPD redress funds):** exploring the opportunities for increasing fuel poverty referrals through engaging

**Community Consent for Low Carbon Future (Esmée Fairbairn Foundation):** supporting Low Carbon Neighbourhood Plans embedding energy and environmental objectives and climate change mitigation.

**Community Energy for Everyone (Joseph Rowntree Charitable Trust):** this project aims to identify, develop and disseminate learning, tools and resources that will increase the participation, capacity and leadership of marginalised communities in community energy activity and to support those who could facilitate and catalyse similar projects in future.

**Door to door Radstock (Bath & West Community Energy):** Raising awareness of energy efficiency support services and helping residents to be more energy efficient in Radstock and Midsomer Norton.

**EASE (Big Lottery Fund Grant):** supporting disabled and older vulnerable people to keep their homes warm and afford their energy bills.

**Food Energy Water Urban Living Lab (Innovate UK):** CSE is the energy partner in an 'Urban Living Lab' in Bristol to explore the food, water and energy nexus. The project using a systems approach to explore how to optimise the economic, social and environmental value of anaerobic digestion of food and sewage waste at Bristol's main sewage farm and the associated production of renewable gas and soil-improving fertiliser.

**Futureproof (BEIS):** Futureproof aims to make it easy for homeowners & contractors in the West of England to carry out energy saving improvements & refurbishments with confidence

**Get Ready for MEES (The TDS Charitable Foundation):** providing advice, guidance and support to residential landlords in the south west to understand their legal obligations in the wake of the new minimum energy efficiency standards.

**HEART (Big Lottery Fund Grant):** Supporting fuel poor households in Somerset, especially those in private rented accommodation to stay warm at an affordable cost.

**Home Visit Plus (WPD redress funds):** exploring how we can improve outcomes for the people we help when making a home visit. We looked at two areas incorporating theories of behavioural change and practical small measures to improve the warmth and comfort of clients' homes

**One Worry Less (Wessex Water Money Matters Fund):** supporting lone parents in Bristol, particularly those in financial hardship through home visits, telephone advice and workshops on financial capability.

**OPEN (Austin & Hope Pilkington):** Recruiting older volunteers to help promote and deliver energy efficiency advice to vulnerable household in the West of England.

**Smart & Easy Energy (NEA):** raising awareness and encouraging acceptance of smart meter installations among older people who do not have who do not have easy internet access.

**Smart Metering for Vulnerable Households (Joseph Rowntree Foundation):** trial in partnership with British Gas to test interventions to support vulnerable households to benefit from smart metering.

**Smart & Snug (WPD redress funds):** using advanced data monitoring technology to help the Home Energy Team give personalised advice to people using night storage heaters. We used sensors to collect data about how storage heaters were being used. The data was presented in a visually accessible format which Home Energy Team advisors used to give personalised support to householders.

**Smolder (Smart Energy GB):** Raising awareness and encouraging the uptake of smart meters amongst those aged over 65.

**THERMOS (EC Horizon 2020):** a multi-partner project that aims to accelerate the development of low-carbon district energy networks in Europe.

Cont ...

**NOTE 14 (CONTINUED). Statement of funds**

**Warm & Safe Wiltshire (Wiltshire Council):** delivering telephone energy advice to residents under the Warm and Safe Wiltshire banner.

**Warm Homes Wiltshire (National Grid Warm Homes Fund):** delivering outreach and home visit energy advice to residents across Wiltshire, including Swindon under the Warm and Safe Wiltshire banner.

**Warmer Homes Advice & Money (WHAM) (Bristol City Council):** delivered in partnership by CSE, Talking Money and WE Care & Repair – supporting people living in Bristol who are struggling with fuel poverty.

**WHAM Fuel Good Fund (Bristol Energy):** supporting the WHAM project and helping Bristol Energy to fulfil their commitment to support people in fuel poverty.

**WPD Redress Evaluation (WPD derogation funds):** evaluation and dissemination of innovative WPD funded projects.

**NOTE 15. Analysis of net assets between funds**

	Unrestricted funds 2019 (£)	Restricted funds 2019 (£)	Total funds 2019 (£)
Tangible fixed assets	126,938	-	126,938
Current assets	1,327,890	-	1,327,890
Creditors due within one year	(674,226)	-	(674,226)
	780,602	-	780,602

**Analysis of net assets between funds - prior year**

	Unrestricted funds 2018 (£)	Restricted funds 2018 (£)	Total funds 2018 (£)
Tangible fixed assets	122,169	-	122,169
Current assets	1,032,518	-	1,032,518
Creditors due within one year	(536,469)	-	(536,469)
	618,218	-	618,218



**NOTE 16. Reconciliation of net movement in funds to net cash flow from operating activities**

	2019 (£)	2018 (£)
Net income/(expenditure) for the year (as per Statement of Financial Activities)	162,384	(87,256)
<b>Adjustment for</b>		
Depreciation charges	24,651	18,224
(Increase)/decrease in debtors	(291,923)	(15,422)
Increase/(decrease) in creditors	137,757	12,237
Net cash (used in)/provided by operating activities	32,869	(72,217)

**NOTE 17. Analysis of cash and cash equivalents**

	2019 (£)	2018 (£)
Cash in hand	483,466	480,017
Total	483,466	480,017

**NOTE 18. Pension commitments**

The charity operates a defined contribution pension scheme. The assets of the scheme are held separately from those of the charity in an independently administered fund. The pension cost charge represents contributions payable by the charity to the fund and amounted to £109,160 (2018: £85,427). Contributions totalling £18,732 (2018: £16,792) were payable to the fund at the balance sheet date and are included in creditors.

**NOTE 19. Operating lease commitments**

At 31 March 2019 the total of the charity's future minimum lease payments under non-cancellable operating leases was:

	Land & buildings 2019 (£)	Land & buildings 2018 (£)	Other 2019 (£)	Other 2018 (£)
<b>Amounts payable</b>				
Within 1 year	108,360	45,150	1,323	46,473
Between 1 and 5 years	388,290	433,440	2,588	3,911
After more than 5 years	-	63,210	-	-
Total	496,650	541,800	3,911	50,384

■ The total expenditure incurred in relation to operating leases was £91,923 (2018: £93,179).

**NOTE 20. Related party transactions**

Kaye Welfare, a trustee of the charity, is also a part-time consultant for EVOLVE Home Energy Solutions. EVOLVE HES work on ECO Innovation and other insulation projects. During the year, the charity was invoiced by EVOLVE HES for £45,356 (2018: £Nil) towards the costs of measures installed under these projects and £5,079 (2018:£Nil) was owed at year end.

Andrew Darnton, a trustee of the charity, has a directorship in A D Research & Analysis Limited with which CSE undertook a number of projects in 2018-19. During the year, the charity invoiced £42,661 to A D Research & Analysis Ltd (2018: £Nil) for services provided and £25,344 (2018: £Nil) was outstanding at year end.

Bill Hull, a trustee of the charity, is a designated member of TLT LLP. During the year TLT LLP invoiced £5,568 (2018: £15,081) to the charity for services provided. There was no balance outstanding at year end.

Ariane Crampton, a trustee of the charity, was an employee of Wiltshire Council for part of the year. The charity invoiced for £89,042 (2018: £32,500) for Warm & Safe Wiltshire that is held in a separate bank account, and pays for measures on a claim by claim basis. Any unspent funds will be returned to Wiltshire Council at the end of the project. Ariane had declared her trusteeship on the Council's register of interests and took no part in procurement decisions that involve CSE.

Felicity Jones, a Trustee of the charity, is an employee and minority shareholder of Everoze Partners Ltd. During the year 2018-19, Everoze Partners Ltd invoiced CSE for £15,615.98 excl VAT. This was as subcontractor to CSE for the Next Generation programme, a project funded by Power to Change.

Simon Roberts, the Chief Executive of the charity, is also a non executive director of Thrive Renewables plc. During the year the charity invoiced Thrive Renewables £16,212 (2018: £12,355) for Simon Roberts' services and for managing the company's Community Benefit Fund. £Nil (2018: £4,400) was owing to the charity.

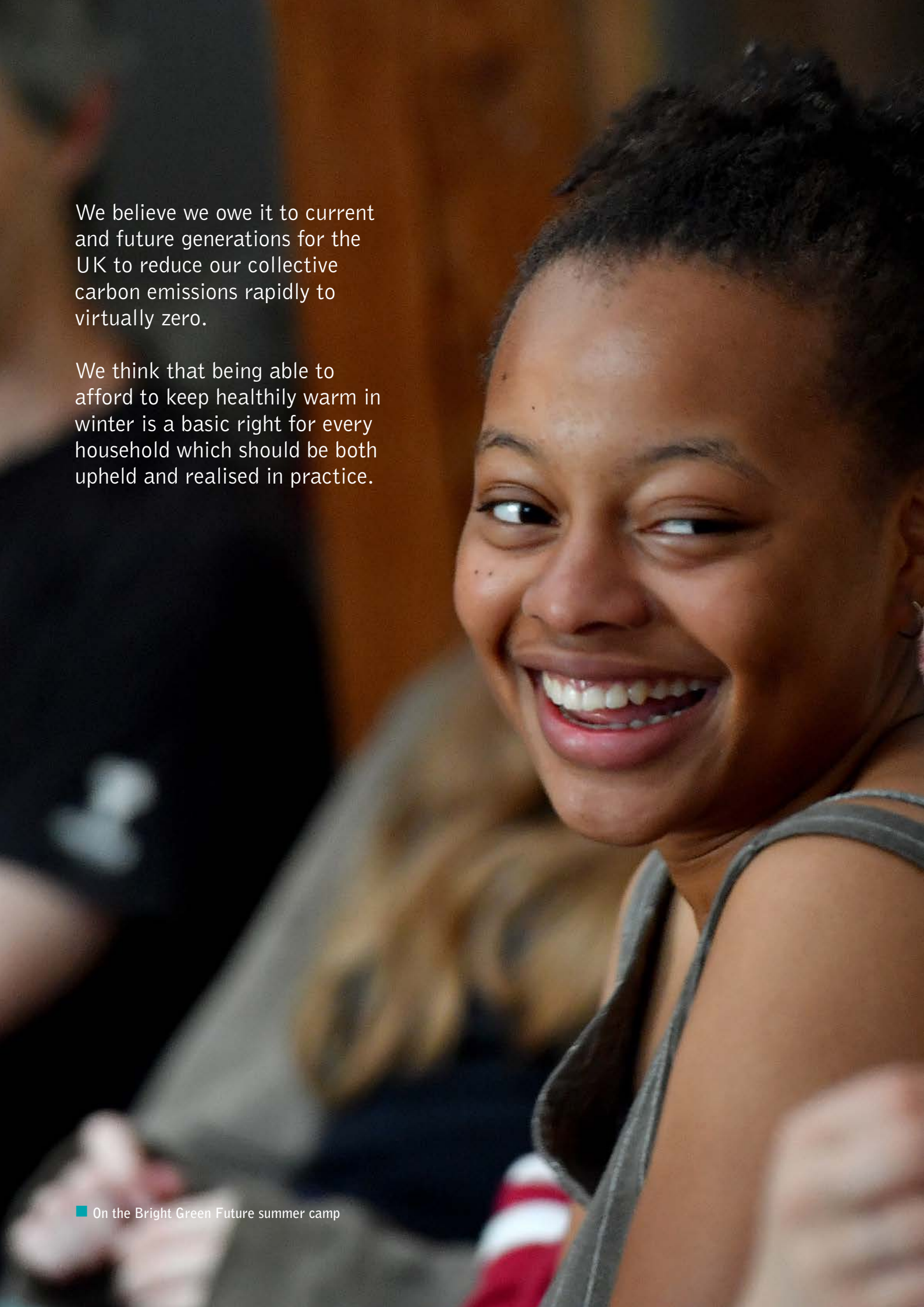
Simon Roberts, the Chief Executive of the charity, is a non executive director of Bristol Green Capital Partnership CIC. The charity made a subscription of £3,500 in the year (2018: £3,500) to support the work of the Partnership and, since May 2016, CSE also provides it with bookkeeping and payment services on a pro bono basis.

**NOTE 21. Assets held on behalf of third parties**

The charity acts as an agent in administering and distributing funds provided to it for which the charity has no responsibility for their ultimate application and acts on the direct instructions of the funds' donors. As at 31 March 2019 the charity held funds of £17,629 (2018: £197,239) which are not included in these financial statements but are held in separate bank accounts for the original donor and are returnable on demand.

The charity is also holding €585,384 (£505,337) (2018: €818,823 (£718,627)) in relation to the THERMOS project as the lead partner. These funds are held in a separate bank account and are included in these financial statements; the funds will be distributed to partners as the project progresses for the original donor and are returnable on demand.



A close-up, slightly off-center shot of a young Black woman with short, dark, curly hair. She is smiling broadly, showing her teeth, and looking back over her right shoulder towards the camera. She is wearing a grey tank top. The background is blurred, showing other people in a social setting.

We believe we owe it to current and future generations for the UK to reduce our collective carbon emissions rapidly to virtually zero.

We think that being able to afford to keep healthily warm in winter is a basic right for every household which should be both upheld and realised in practice.

